



**CALIFORNIA**  
High-Speed Rail Authority

# **CONNECTING AND TRANSFORMING CALIFORNIA**

**Karen Massie, Information Officer**

**SBA Southern California and Small Business Conference**

**April 26, 2016**

**Garden Grove, California**



# CONNECTING CALIFORNIA



- **Phase I:**
  - » 520 Miles
  - » San Francisco to Los Angeles/Anaheim
- **Phase II:**
  - » Extends 300 Miles
  - » Connections to Sacramento & San Diego

# CONNECTING CALIFORNIA: Central Valley

- **Construction Package 1: 29 Miles**

- » Between Madera and Fresno
- » DB: Tutor Perini/Zachry/Parsons
- » PCM: Wong+Harris



- **Construction Package 2-3: 65 Miles**

- » Between Fresno and Tulare-Kern County Line
- » DB: Dragados/Flatiron
- » PCM: Arcadis



- **Construction Package 4: 22 Miles**

- » Between Tulare-Kern County Line and North of Bakersfield
- » DB: California Rail Builders
- » PCM: HNTB

# CONNECTING CALIFORNIA: Southern California

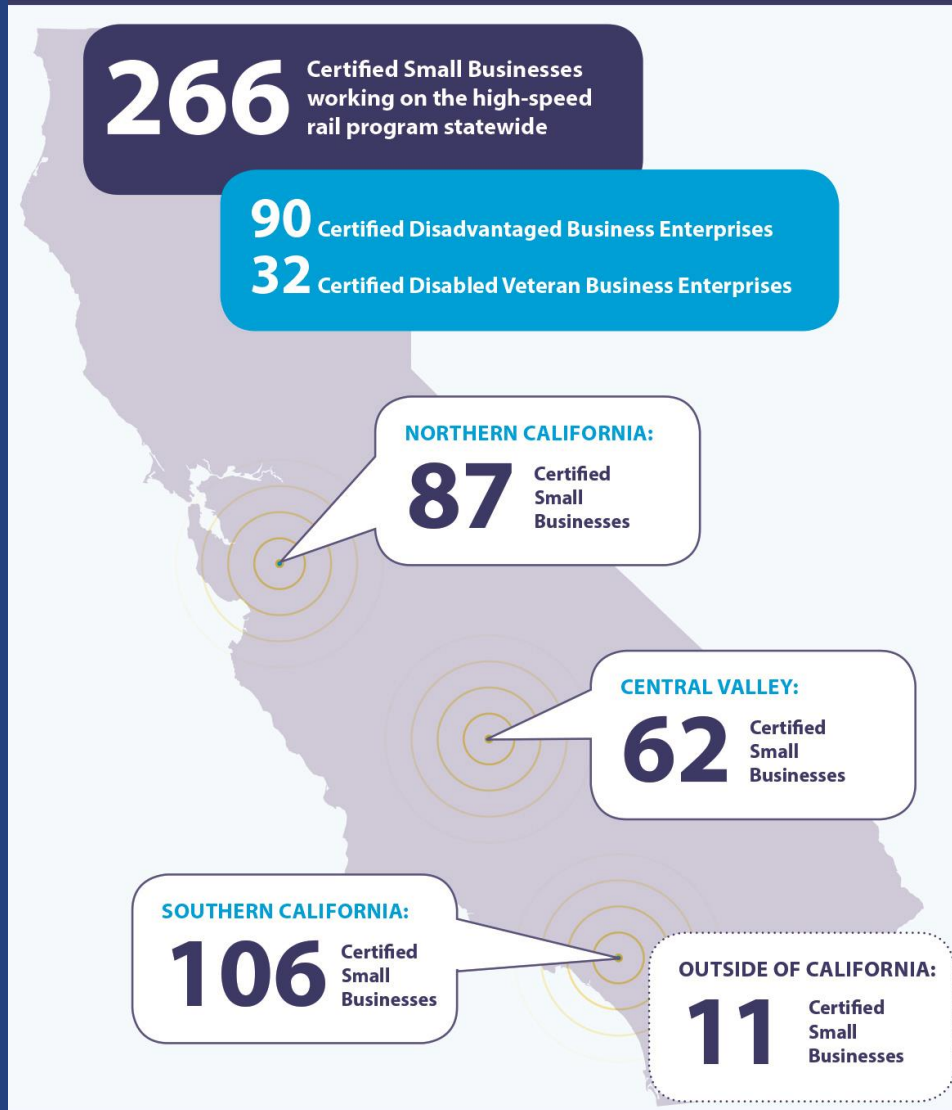
- **Connections** within Southern California
- **Closes** Passenger Rail Gap between Central Valley and Southern California
- **Multi-Modal Transportation Hubs**
  - » Palmdale Transportation Center
  - » Burbank
  - » LA Union Station
  - » ARTIC (Anaheim)



# SMALL BUSINESS PROGRAM

SMALL BUSINESS PARTICIPATION\*

AS OF MARCH 2016



- **30% Goal for Small Business Participation**
  - » 10% Disadvantaged Business Enterprises (DBE)
  - » 3% Disabled Veteran Business Enterprises (DVBE)

# CURRENT OPPORTUNITIES

---

- **HSR 15-107: Request for Qualifications for Environmental Services for the Merced to Fresno Project Section**
- **HSR 15-108: Request for Qualifications for Environmental Services for the Fresno to Bakersfield Project Section**
- **HSR 15-93: Request for Qualifications for High-Speed Rail Systemwide Vision Plan for Stations**

# HIGH-SPEED RAIL DESIGN-BUILD PARTNERS

---

- **Construction Package 1**
  - » Tutor Perini/Zachry/Parsons
  - » Maurice Young
  - » (559) 385-7025 [maurice.young@tpzpjv.com](mailto:maurice.young@tpzpjv.com)
  
- **Construction Package 2-3**
  - » Dragados Flatiron
  - » John James
  - » (916) 608-4900 [jcjames@jamestrans.com](mailto:jcjames@jamestrans.com)
  
- **Construction Package 4 (Contract Executed)**
  - » California Rail Builders
  - » Joanne Siracusa
  - » (323) 302-4222 [SBinfo@californiarailbuilders.com](mailto:SBinfo@californiarailbuilders.com)
  
- **Rail Delivery Partner: Parsons Brinckerhoff**
  - » Terry Marcellus
  - » (916) 324-9650 [marcellusta@pbworld.com](mailto:marcellusta@pbworld.com)

# STAY INVOLVED

---

**Karen Massie**, Information Officer

(916) 403-0558 [karen.massie@hsr.ca.gov](mailto:karen.massie@hsr.ca.gov)

## Headquarters

California High-Speed Rail Authority

770 L Street, Suite 800

Sacramento, CA 95814

[www.hsr.ca.gov](http://www.hsr.ca.gov)



[instagram.com/cahsra](https://www.instagram.com/cahsra)



[facebook.com/CaliforniaHighSpeedRail](https://www.facebook.com/CaliforniaHighSpeedRail)



[twitter.com/cahsra](https://twitter.com/cahsra)



[youtube.com/user/CAHighSpeedRail](https://www.youtube.com/user/CAHighSpeedRail)